

## Safe Healthcare for All: an IPC Perspective; where the heck are we?

In a mess....

*Mess n: a situation that is confused and full of problems*

1

My lowest ebb

They knew it was airborne, they knew  
all along, they failed to show regret,  
reason, remedy (change)

Defeat may be victory in disguise  
The lowest ebb is the turn of the tide.

Henry Wadsworth Longfellow

2

## Understand the problem Potential approaches

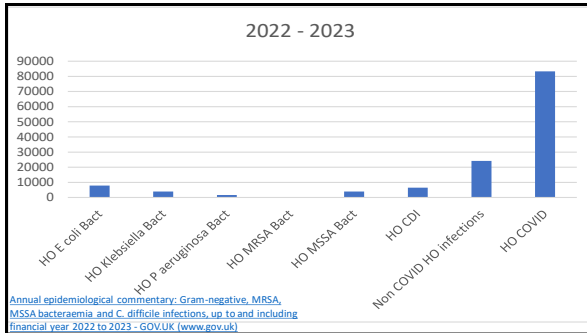
3

A winter respiratory infection which poses no more additional harm than other winter respiratory viruses. Long covid is not a thing.

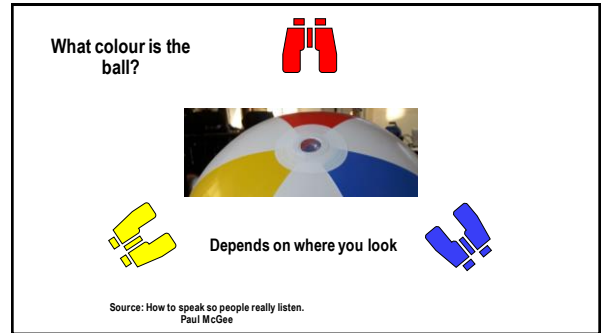
COVID-19 is

A year-round infectious airborne disease that is coagulopathic, vasculopathic, neuropathic, immune damaging. It causes a range of other significant life-altering and life-limiting long term sequelae, [Long COVID].  
The > no of infections > risk  
A disease that some people are more vulnerable to (incidence & outcome).  
The impact of the infection is not measured by symptoms.  
There is no and will be no herd immunity (not seeable).  
The biggest nosocomial infection threat...

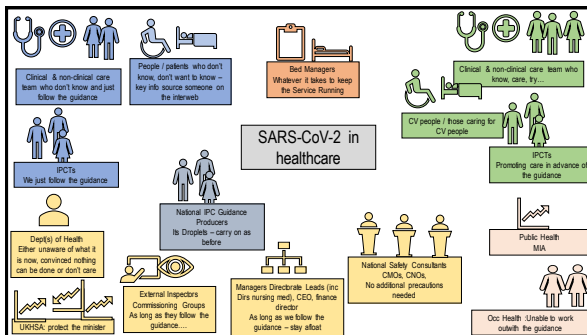
4



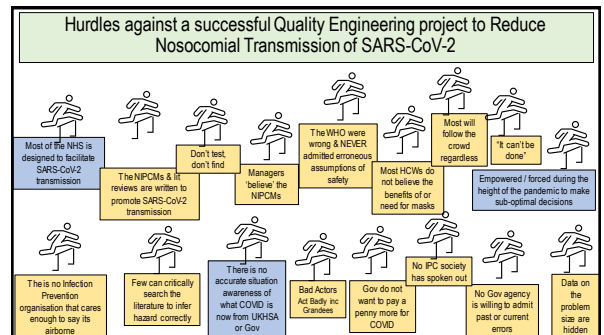
5



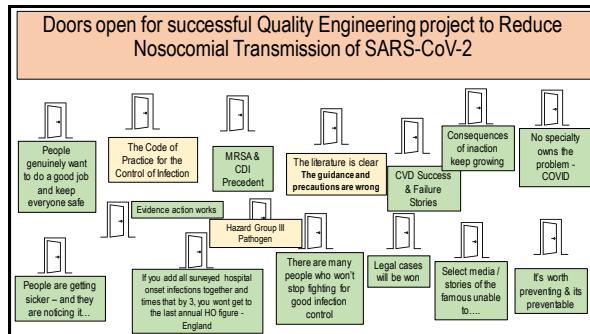
6



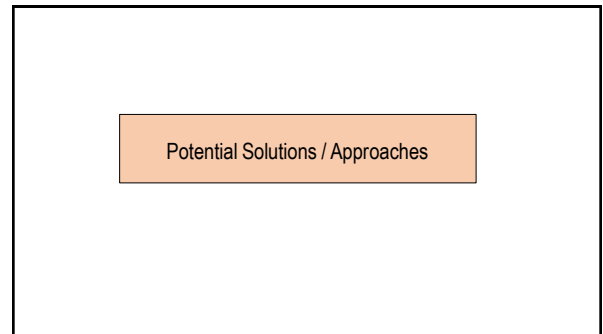
7



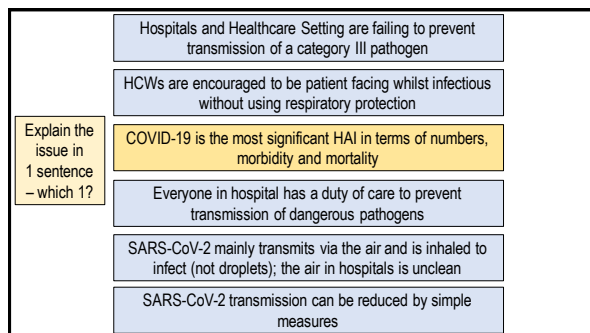
8



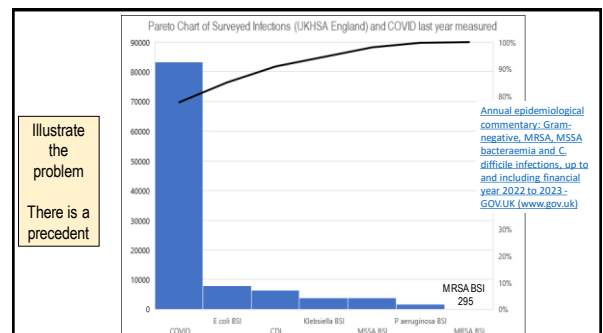
9



10



11



12

**Compliance criterion**

What the registered provider will need to demonstrate

**Use their documents to ask why....**

**Criterion 1**  
Systems to manage and monitor the prevention and control of infection. These systems use risk assessments and consider the susceptibility of service users and any risks that their environment and other users may pose to them.

**Criterion 2**  
The provision and maintenance of a clean and appropriate environment in managed premises that facilitates the prevention and control of infections.

**Criterion 3**  
Appropriate antimicrobial use and stewardship to optimise outcomes and to reduce the risk of adverse events and antimicrobial resistance.

13

**Criterion 4**  
The provision of suitable accurate information on infections to service users, their visitors and any person concerned with providing further social care support or nursing/medical care in a timely fashion.

**Criterion 5**  
That there is a policy for ensuring that people who have or are at risk of developing an infection are identified promptly and receive the appropriate treatment and care to reduce the risk of transmission of infection to other people.

**Criterion 6**  
Systems are in place to ensure that all care workers (including contractors and volunteers) are aware of and discharge their responsibilities in the process of preventing and controlling infection.

**Criterion 7**  
The provision or ability to secure adequate isolation facilities.

**Criterion 8**  
The ability to secure adequate access to laboratory support as appropriate.

14

**Criterion 9**  
That they have and adhere to policies designed for the individual's care, and provider organisations that will help to prevent and control infections.

**Criterion 10**  
That they have a system or process in place to manage staff health and wellbeing, and organisational obligation to manage infection, prevention and control.

[Health and Social Care Act 2008: code of practice on the prevention and control of infections and related guidance : GOV.UK \(www.gov.uk\)](https://www.gov.uk/government/publications/health-and-social-care-act-2008-code-of-practice-on-the-prevention-and-control-of-infections-and-related-guidance)

15

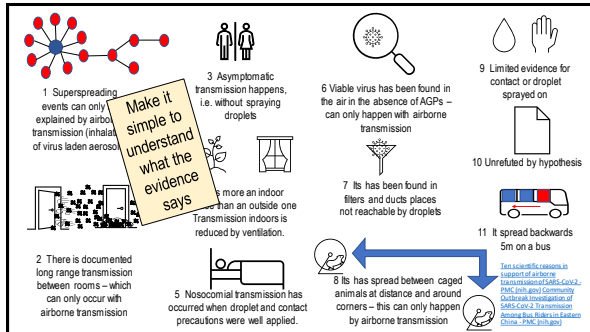
**CATCH 22**

**Criterion 5**  
That there is a policy for ensuring that people who have or are at risk of developing an infection are identified promptly and receive the appropriate treatment and care to reduce the risk of transmission of infection to other people.

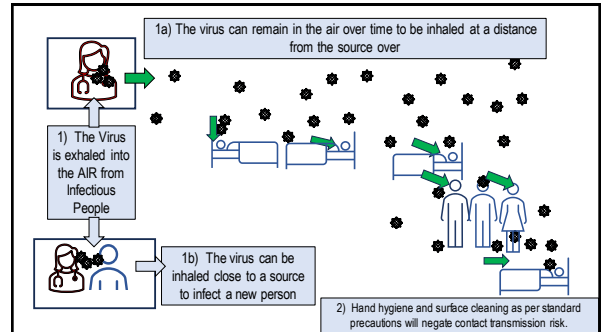
**Follow the NIPCM**

**NIPCM does not recognise CV people Nor SARS-CoV-2**

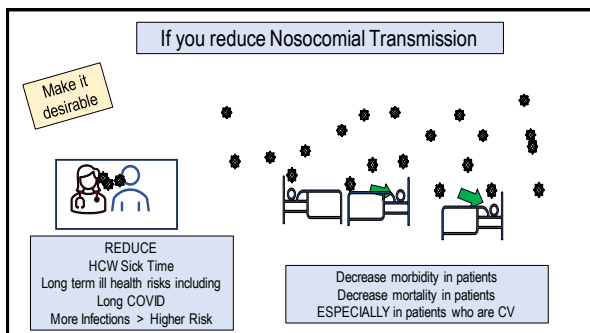
16



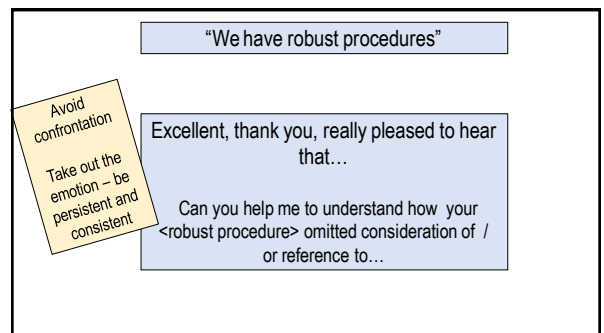
17



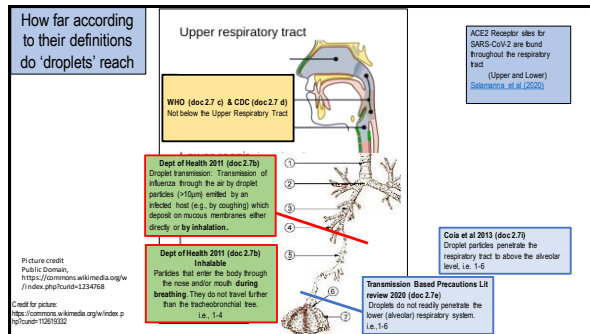
18



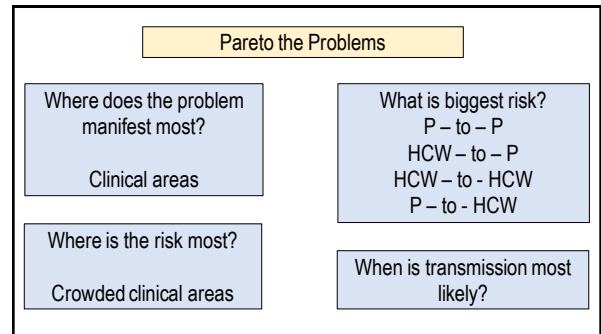
19



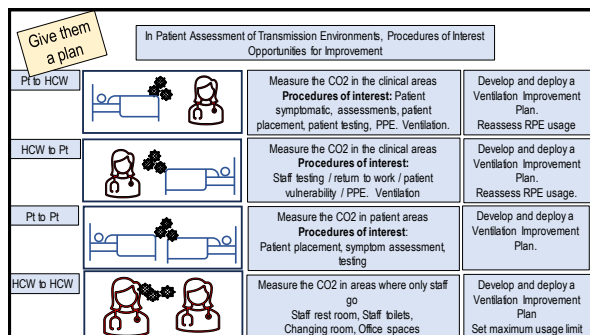
20



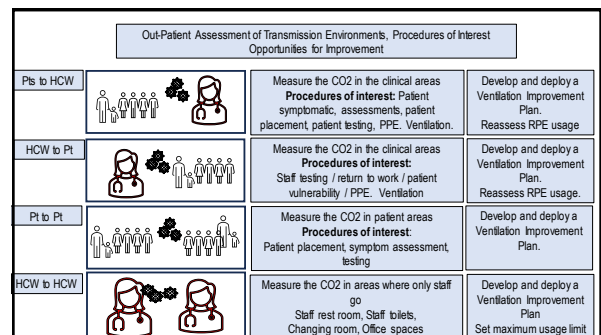
21



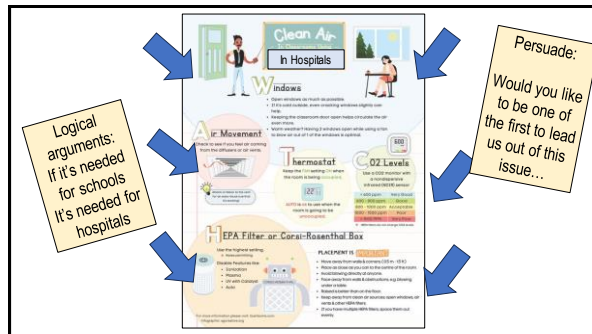
22



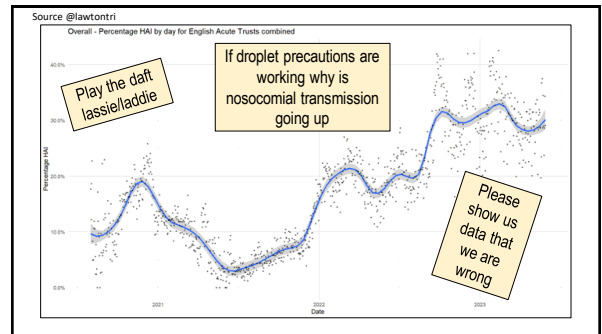
23



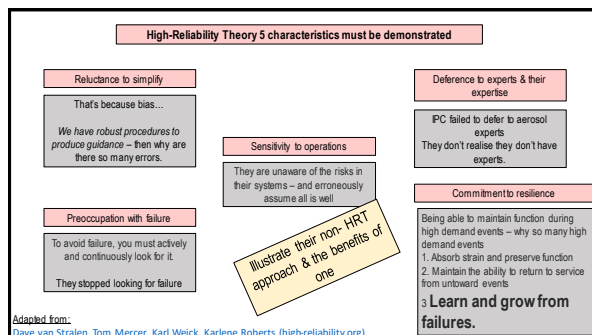
24



25



26



27

**Where are we – at the turn of the tide**

Defeat may be victory in disguise  
The lowest ebb is the turn of the tide.

Henry Wadsworth Longfellow

28